

Tangier Island



SHORELINE PROTECTION & RESILIENCY PLAN

Town Hall - Project Priorities & Resiliency Strategies Meeting
Monday, May 11, 2026, 6:00 p.m.

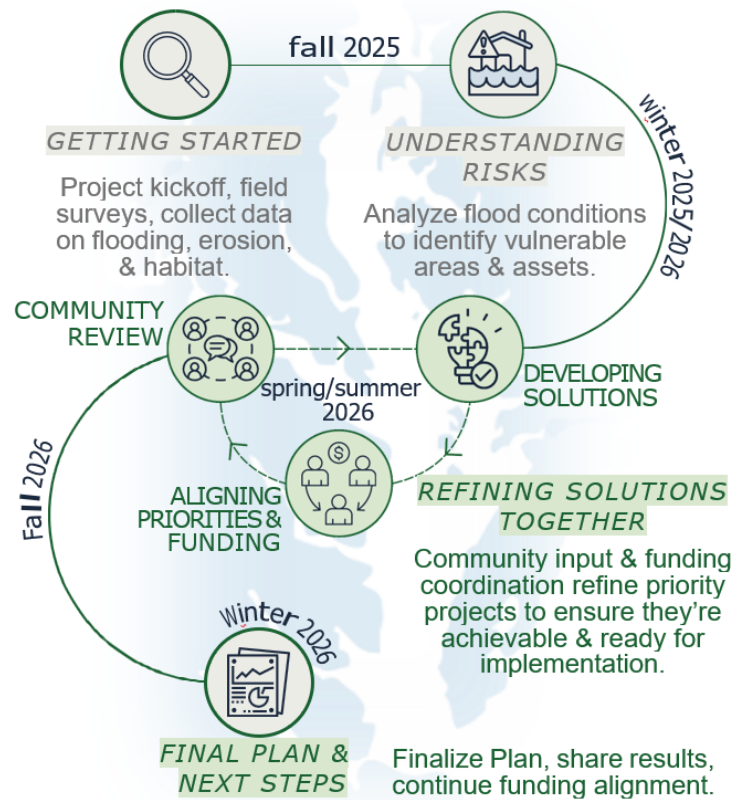


PROJECT OVERVIEW

Identify vulnerable areas, evaluate protection options, & prioritize actions that protect the Island's community, economy, & environment from coastal change.



Many grants for implementation funds require community resilience plans to qualify for funds.



TURNING ASSESSMENTS INTO PROJECTS



1. Assess

Modeling flood and wave exposure under current and future conditions.

2. Prioritize

Identifying priority areas and assets most at risk.

3. Design

Developing conceptual designs for shoreline and flood protection.

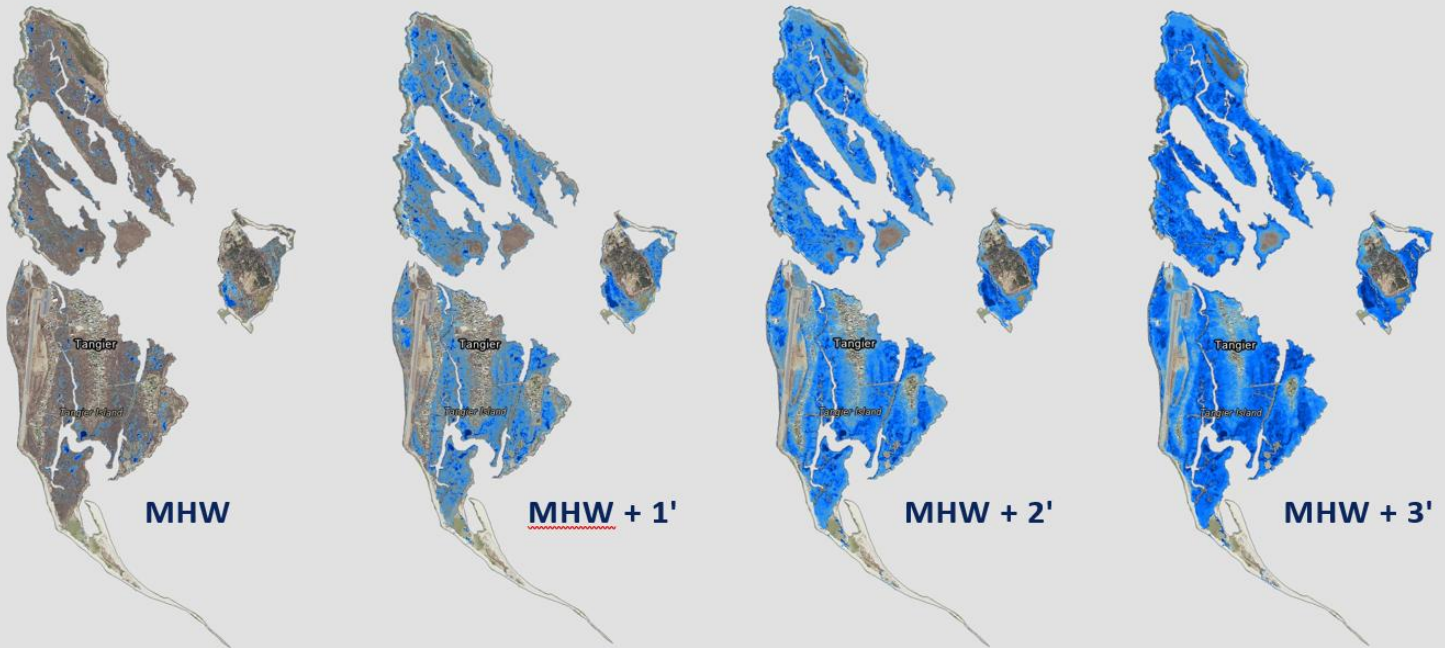
4. Evaluate

Evaluating resilience outcomes through hydrodynamic modeling.

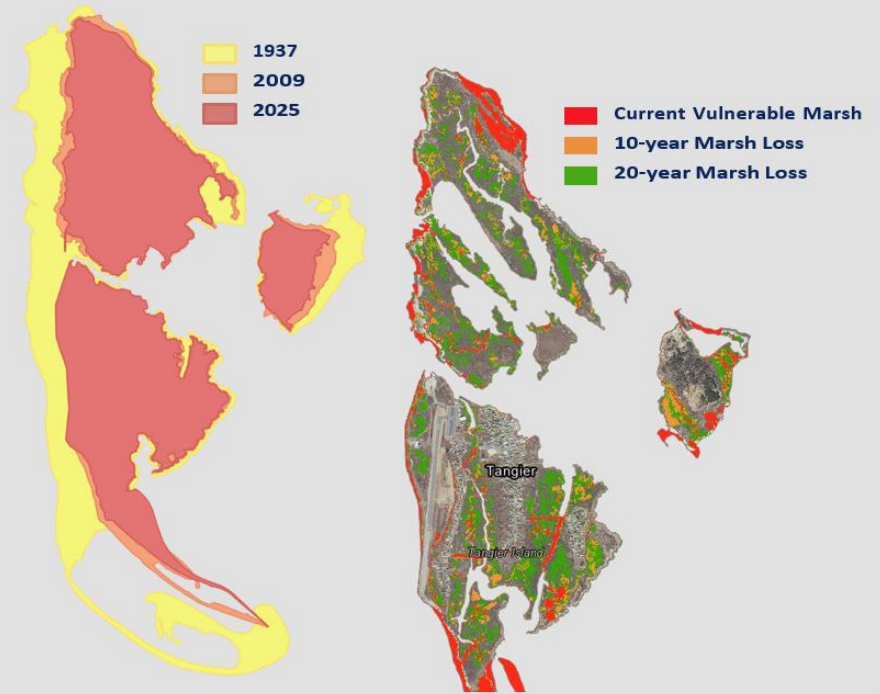
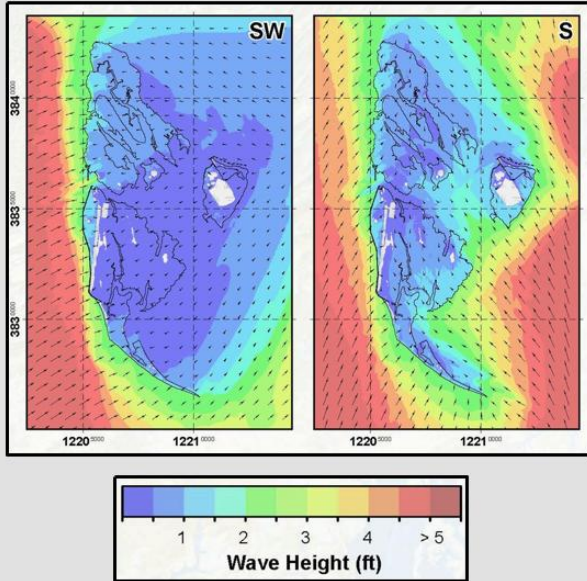
5. Align & Implement

Coordinating efforts to move the highest-priority projects from plan to construction.

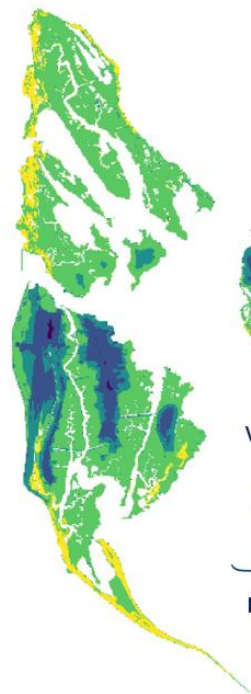
1 ASSESS



1 ASSESS



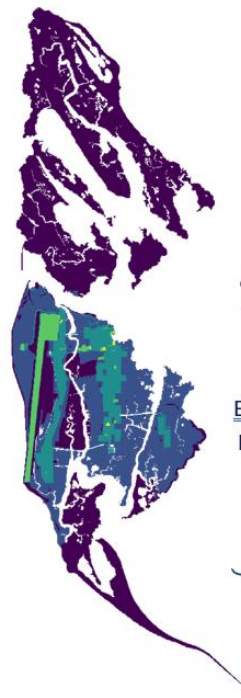
2 PRIORITIZE



Wave Exposure
Flood Risk
Land Loss Risk
Land Type

Environmental Vulnerability Index

+

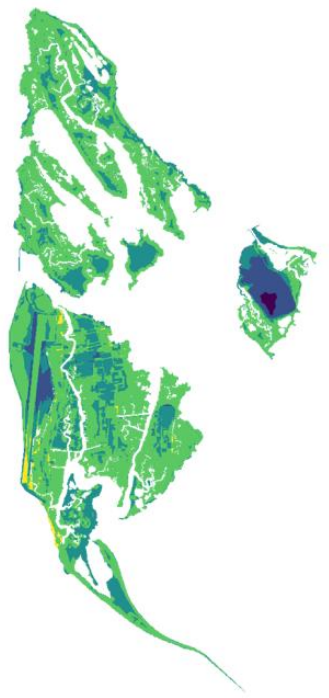


Building Density
Important Sites
Land Use
Population
Roads

Socioeconomic Vulnerability Index

=

Integrated Coastal Vulnerability Index



Vulnerability

Least
Greatest

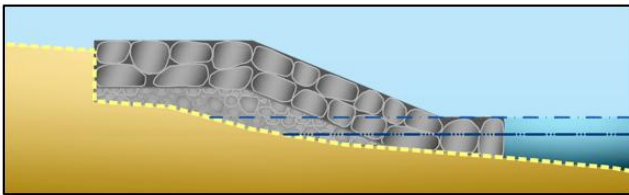
3 DESIGN IDENTIFYING STRATEGIES



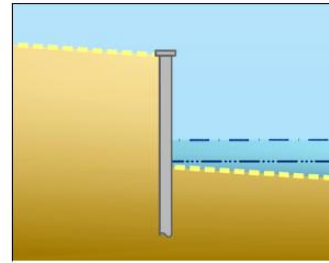
Existing Grade
MHW
MLW

Hardened Structures

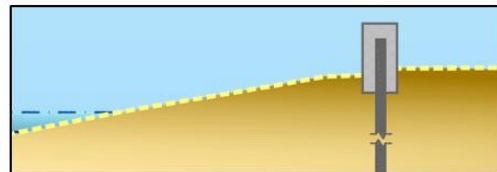
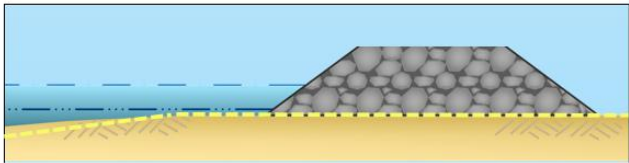
Revetment



Seawalls & Bulkheads



Rockfill Berm

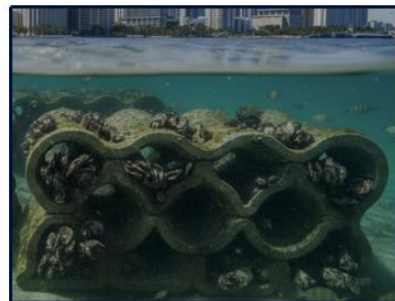
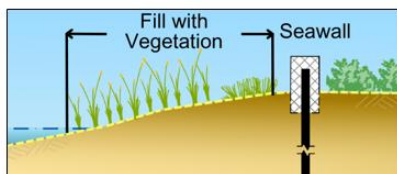
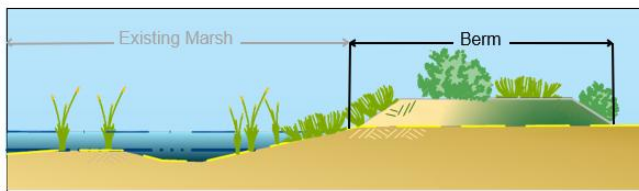
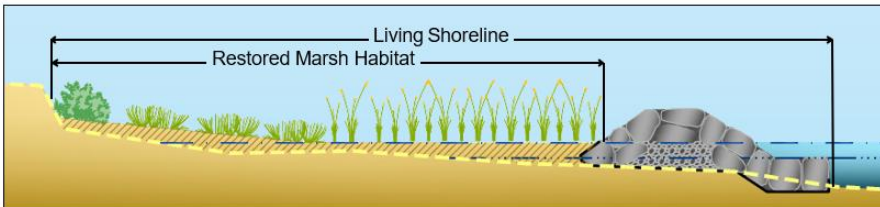


3. DESIGN IDENTIFYING STRATEGIES



Existing Grade
MHW
MLW

Nature-Based/Innovative Alternatives



3. DESIGN IDENTIFYING STRATEGIES

Sediment Planning



Dredged Material Placement Site



Beneficial Use of Dredged Material



Sediment Strategies (The Nature Conservancy)

3. DESIGN IDENTIFYING STRATEGIES

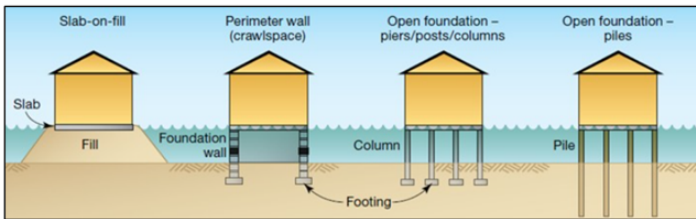
Other Strategies



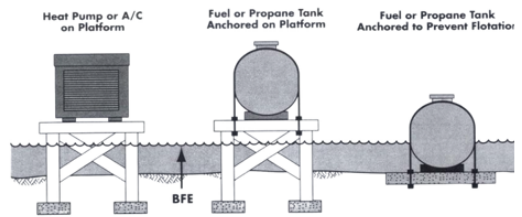
Road Raising



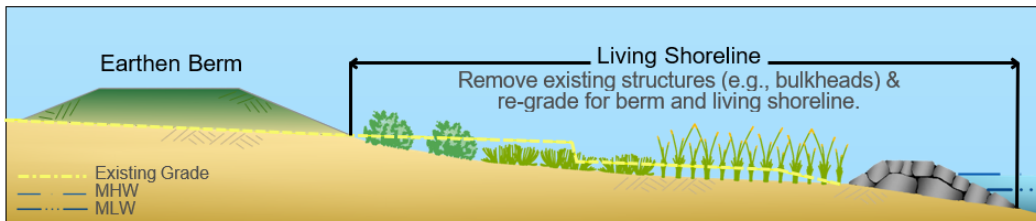
Flood-Proofing



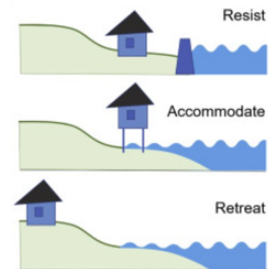
Utility Raising & Redundancy



Beautification/Naturalization



Managed Retreat



3. DESIGN FORMING CONCEPTS



Canton Ridge & Port Isobel Concept Plan

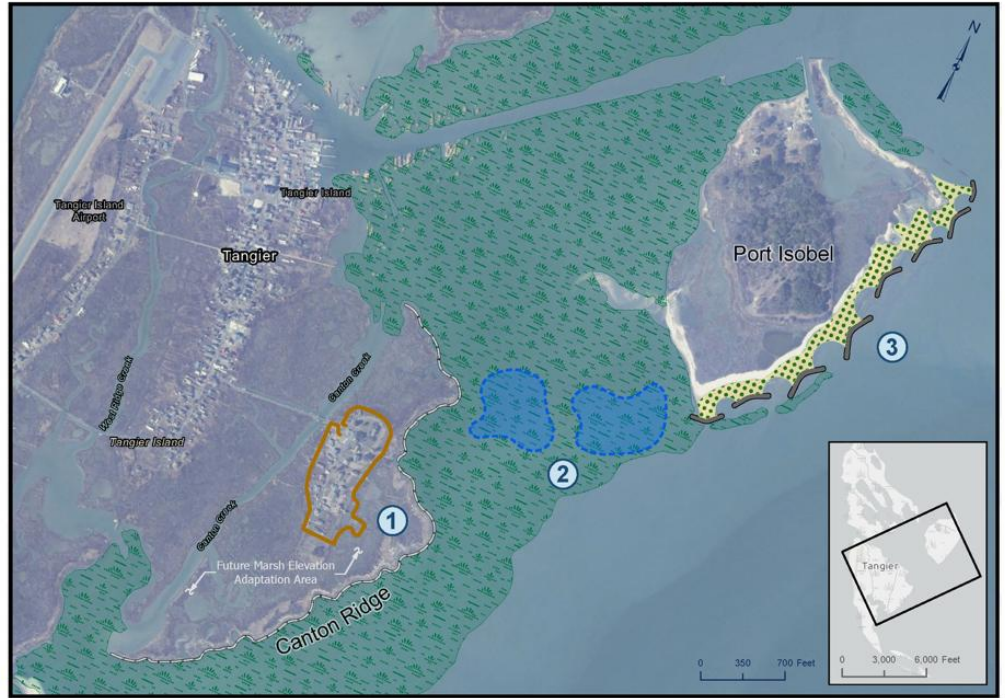
- Berm with Manual Flood Gates
- Marsh Edging
- Tidal Notch
- Submerged Oyster Reef
- Stone Breakwater
- Sand with Marsh Plantings
- VIMS SAV Composite (2020-2024)

MARCH 2026

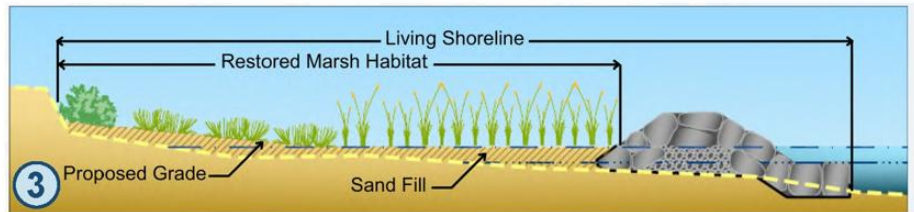
142 ac of marsh protected/restored.

150 ac of SAV protected.

10 ac of community flood resilience.



3. DESIGN FORMING CONCEPTS



WHAT HAPPENS NEXT?



- Compile and review community feedback.
- Finalize prioritization based on community feedback.
- Group strategies into project concepts and form Implementation Plan.
- Align projects and funding strategies.

Questions about the Project:

Andrew Wood



AWood@cbf.org

